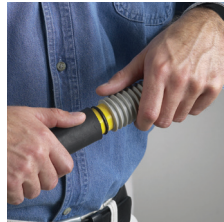




# Vacuum Drywall Pole Sander

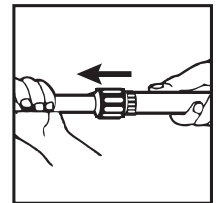
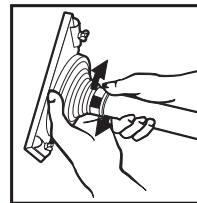
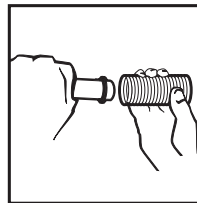
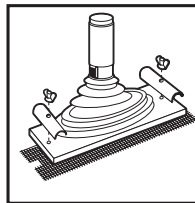
Use with wet/dry shop vacuum



- Telescoping pole adjusts from 3' to 6' (0.9 m x 1.8 m)
- Head pivots in all directions for easy sanding
- Can be locked at 45° angle for tougher sanding

## INSTRUCTIONS:

1. Attach **sanding screen** (not sand paper) to rubber sole plate.
2. Attach adapter hose over black fastener ring on bottom of pole sander.
3. Attach the other end to the vacuum hose. To reduce or increase the amount of suction simply rotate the suction control valve at base of sole plate.
4. Adjust pole length by loosening the locking collar, adjust pole to desired length then retighten collar.



## SUGGESTED DUST CONTROL PROCEDURES:

**Preferred method:** Use a Fine Particle Filter Bag (available separately) with regular shop vacuum filters.

**Alternate Method:** Put 2" of water in bottom of shop vacuum to absorb dust particles.

**Caution:** A filter mask and protective eyewear should always be used when finishing drywall.

**Warning:** The FibaTape® Vacuum Drywall Pole Sander is designed for use with wet/dry shop vacuums. Do not use with standard household vacuum as it can damage the cleaner mechanism.



**SAINT-GOBAIN**

**SAINT-GOBAIN ADFORS  
America, Inc.**

1795 Baseline Road  
Grand Island, NY 14072 - USA  
Phone: 800-762-6694  
Fax: 716-775-3902  
[www.adfors.com](http://www.adfors.com)