



Extra Strength Drywall Tape

INSTALLATION INSTRUCTIONS

Extra Strength **FibaTape**[®] SELF-ADHESIVE DRYWALL TAPE

TOOLS & MATERIALS

- FibaTape drywall joint tape
- Taping knife
- Joint compound
- Sandpaper or sponge

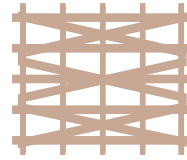
- Drywall finishing

- Crack repair

Wider width mesh and patented, multi-directional design for increased strength and structural integrity.



Self-Adhesive



Extra Strength
Mesh



Patented
Constriction



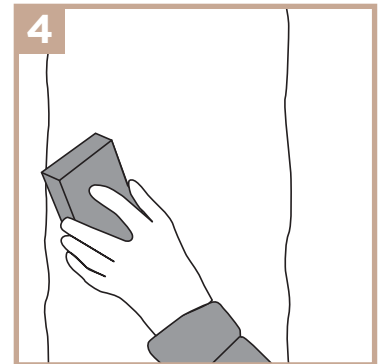
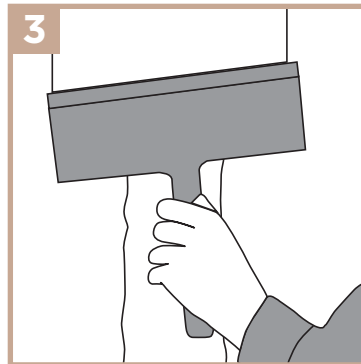
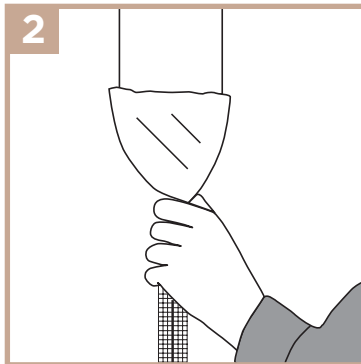
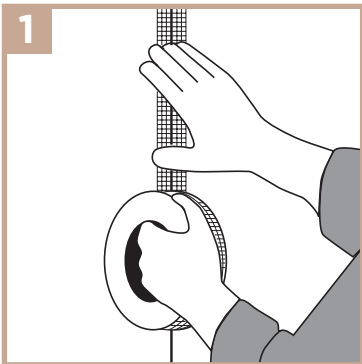
REDUCED DRY TIME: Embedding coat is not required



SKILL LEVEL: Easy application

INSTRUCTIONS:

1. Apply tape to joint or crack.
2. Cover tape with compound and allow to dry.
3. Add additional coats as necessary.
4. Sand to a smooth finish when dry.



Video instructions can be found at
www.adfors.com

MADE IN THE
USA